

77° LIFE

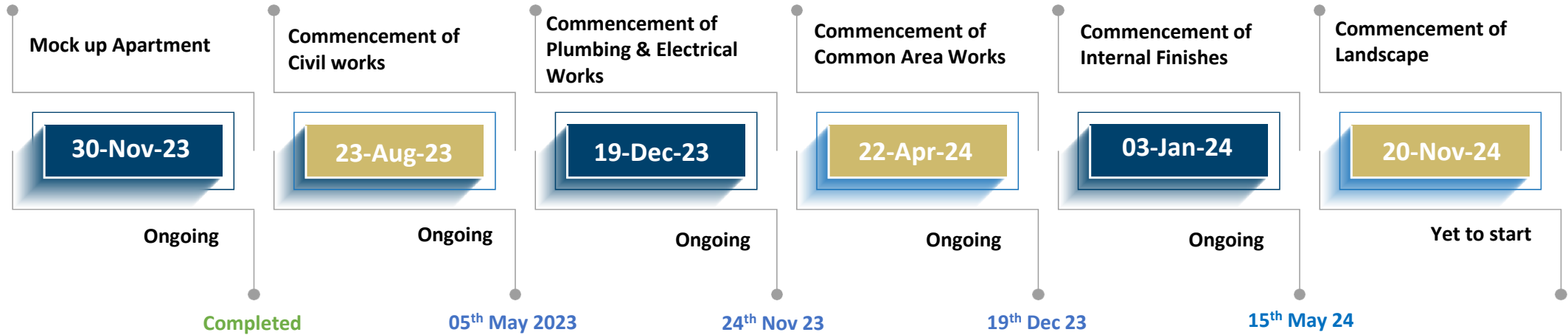
LIFE'S COMING TOGETHER.



CONSTRUCTION UPDATE – SEPTEMBER 2024

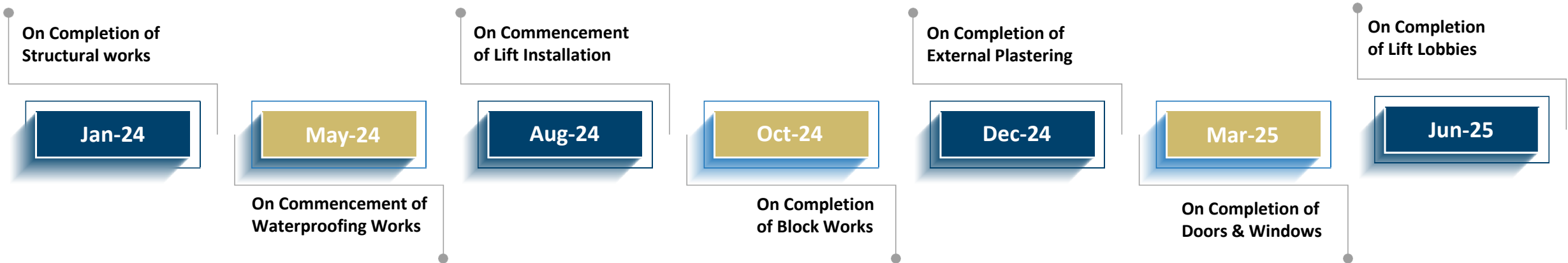
CONSTRUCTION SCHEDULE

MACRO SCHEDULE



PAYMENT MILESTONES

TENTATIVE



* The construction progress schedule presented in this report is subject to change based on evolving project conditions and unforeseen factors.

Flooring and Dado

All Bedrooms

Engineered Wooden Flooring

All Bathrooms

Flooring in Imported Marble, Dado in Premium Vitrified

Powder Rooms

Flooring in Imported Marble, Dado in Premium Vitrified

Plumbing and Bathroom Fixtures

Bathroom Counter

Imported Marble for the Counters

Kitchen Counter and Sink

Quartz Counter (uninstalled)

False Ceiling

Apartment

Gypsum False ceiling with LED concealed lighting as per default design

Toilet

Modular False Ceiling with Calcium Silicate Board Tiles or Equivalent

Power Supply; Electrical and Communication Systems

Wiring

Concealed FRLS Wiring in PVC conduits

Earthing

Earth Leakage Circuit Breaker (ELCB) and Miniature Circuit Breakers (MCB)

Doors and Windows

Main Door

8' Solid Core Double Leaf Doors with Designer Veneer

Internal Doors

7' Solid Core Veneered Flush Doors

Bathroom Doors

7' Solid Core Flush Doors with Veneer & laminate

Utilities & Services

Solar Water Heater

Provided as per M.O.E.F Norms (for Specific Apartments)

Elevators

Schindler or Equivalent

Security

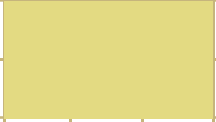
Perimeter Cameras; 24/7 Patrolling, Access Control & Visitor Verification

KEY PLAN
2 DIMENSIONAL

Terrace:
Sky Zone Tennis
Court & Wellness
Deck



Level 11 & 12
Ignis Zone
Social Deck



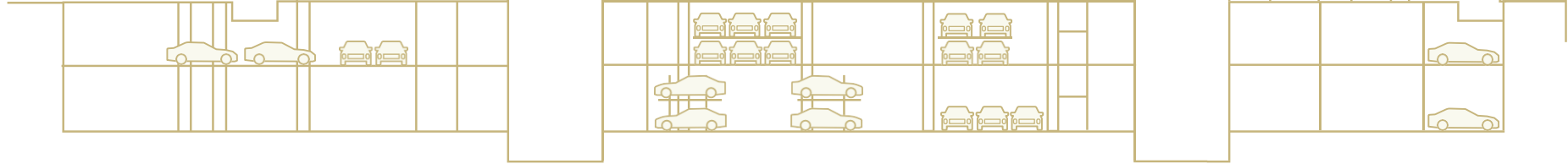
Level 7 & 8
Oasis Zone -
Kid's Entertainment
& Swimming Pool



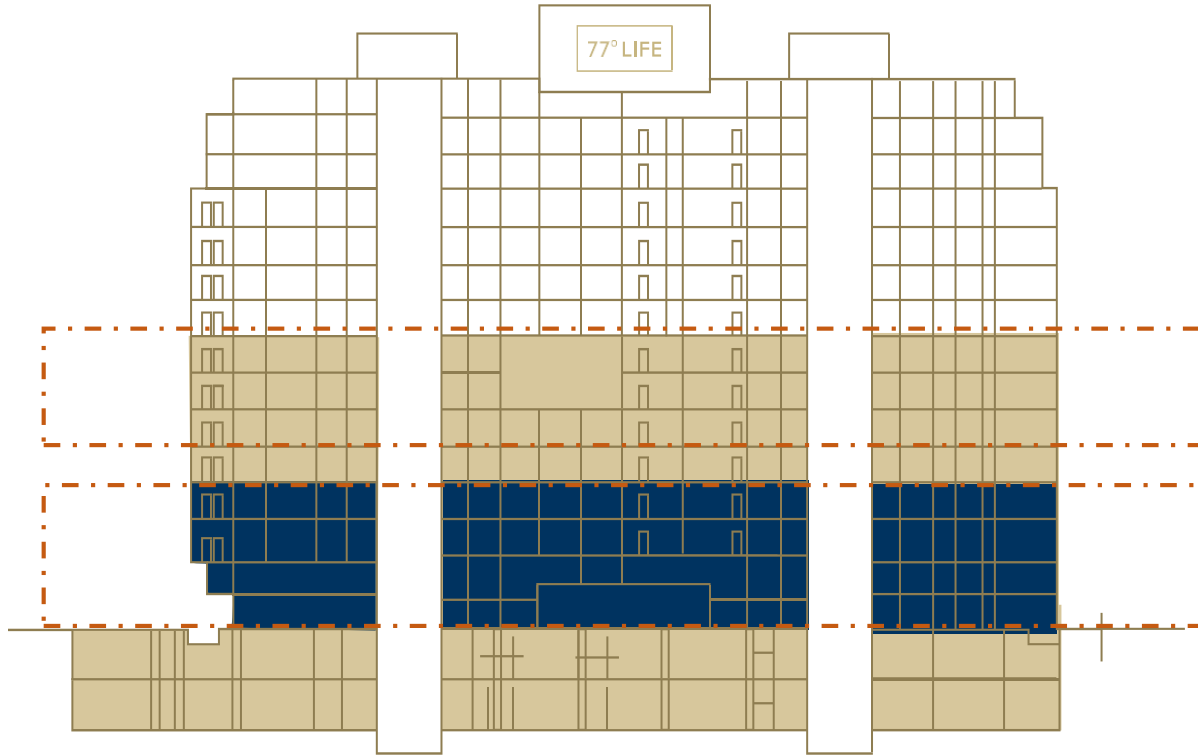
Level 2
Terra Zone
Fitness & Indoor
Games



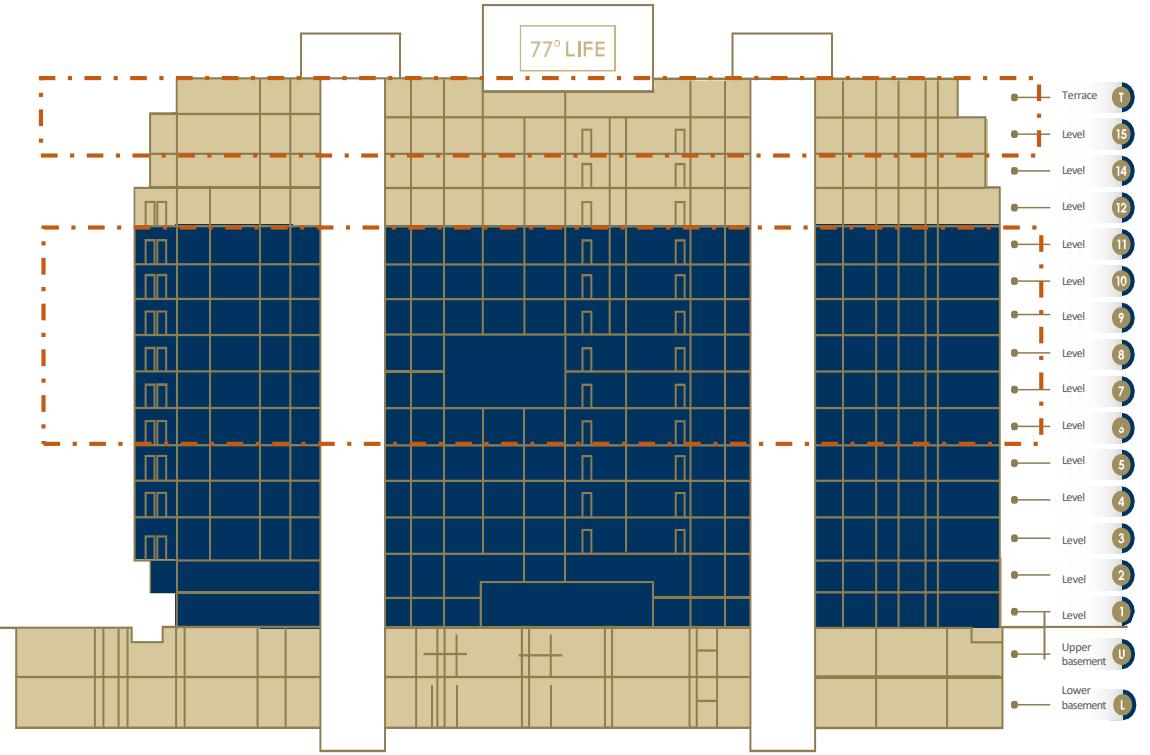
Level 1
Lobby Zone



WATER PROOFING IN PROGRESS



BLOCK WORK IN PROGRESS

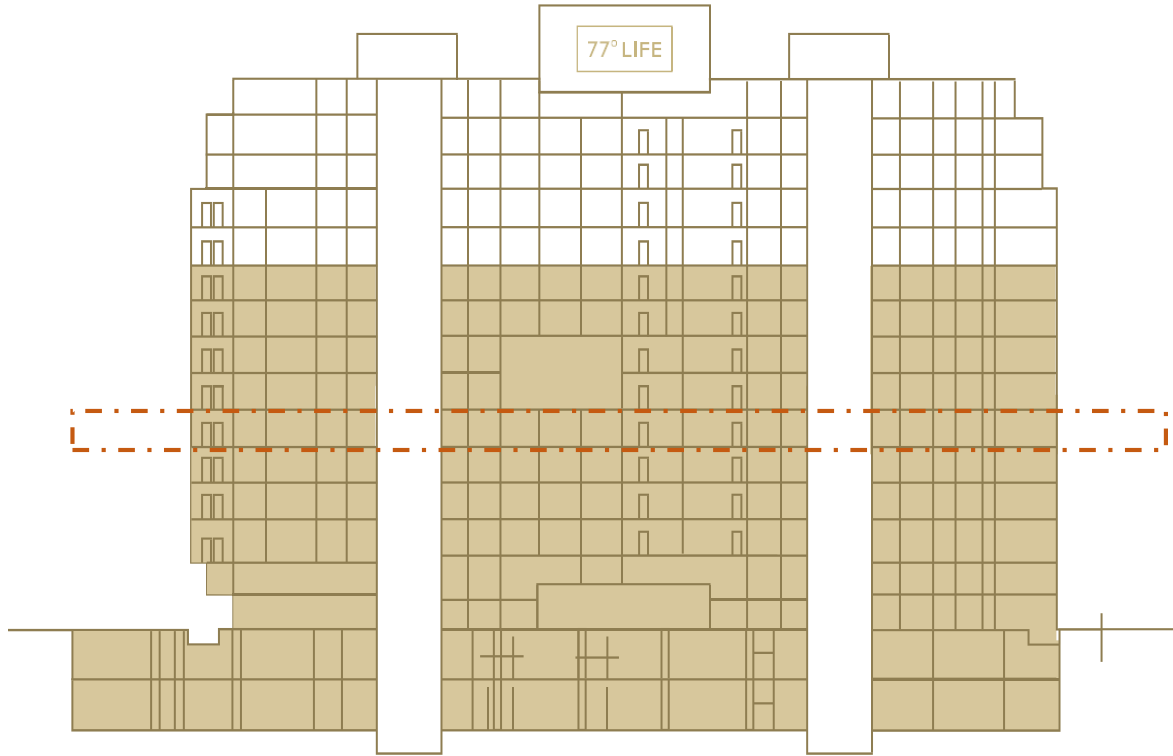


COMPLETED

IN PROGRESS

PROGRESS SINCE
LAST REPORT

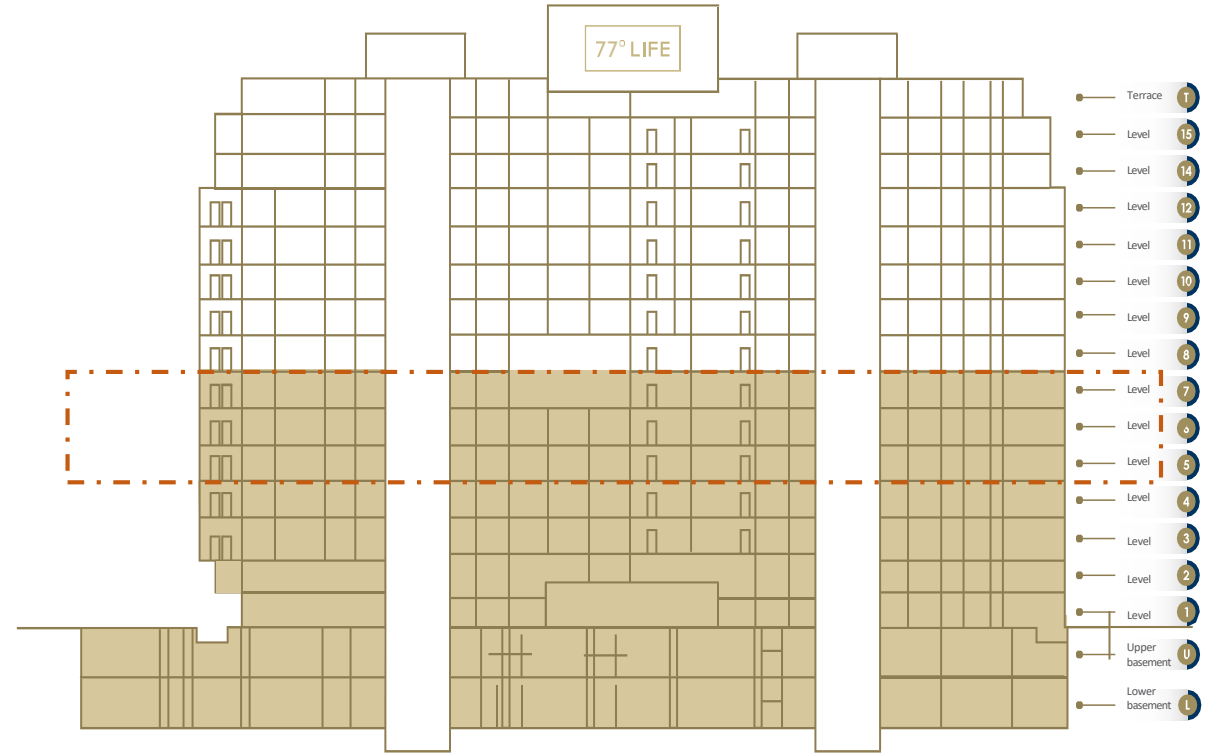
PLUMBING & ELECTRICAL WORKS IN PROGRESS



COMPLETED

PROGRESS SINCE
LAST REPORT

FLOORING WORKS IN PROGRESS



IN PROGRESS



Basement – Flooring works in progress



STP: Structure works in progress



Arrival area wall works in progress



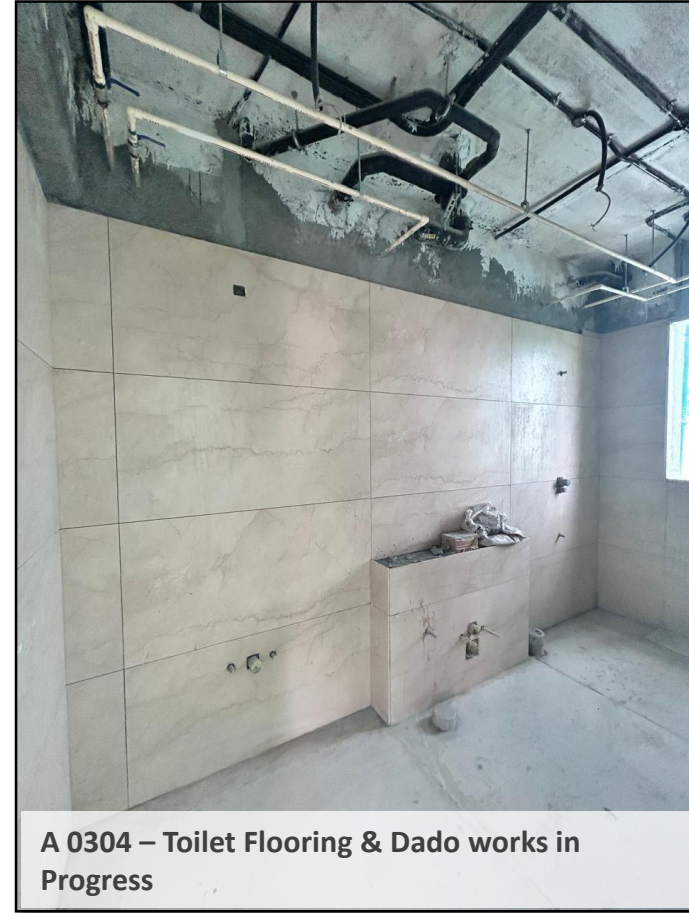
Foundation for DG Yard area works in progress



Lift: Passenger Lift works in progress



Tennis Court MS works in progress





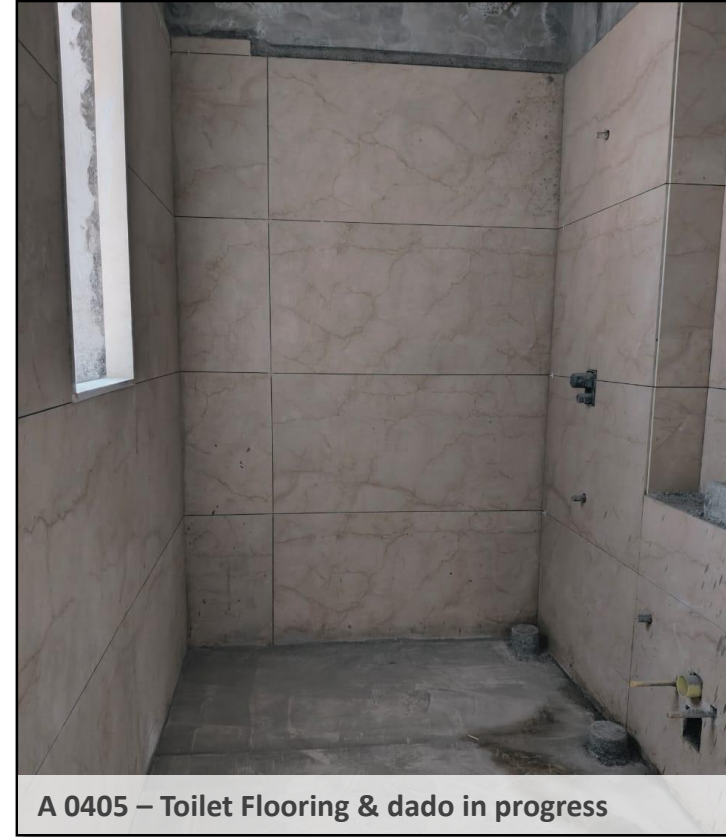
A 0403 – False Ceiling works in Progress



A 0404 – False Ceiling works in Progress



A 0405 – Ceiling conduit works in progress



A 0405 – Toilet Flooring & dado in progress



A 0505 – Flooring works in Progress



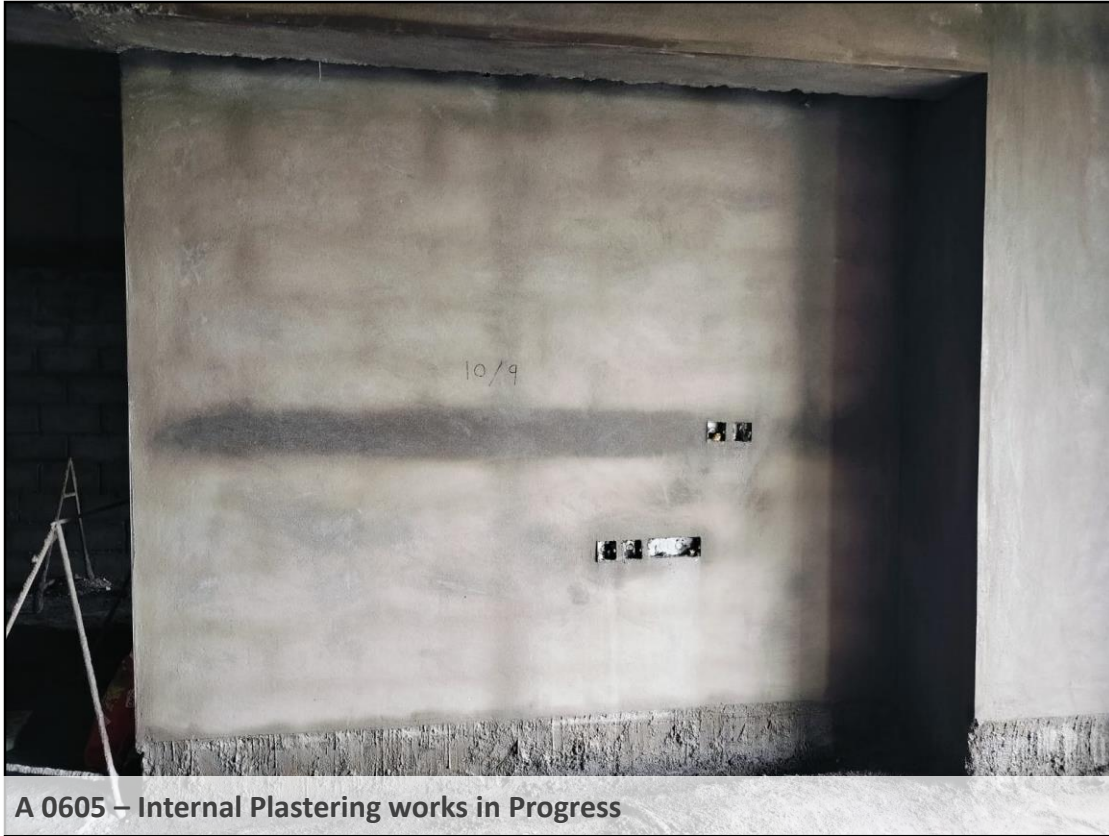
A 0503 – Flooring works in Progress



A 0508 – Waterproofing works in Progress



A 0806 – Waterproofing works in Progress



A 0605 – Internal Plastering works in Progress



A 0710 – Internal Plastering works in Progress



A 1501 & 1509 – Block works in Progress

Sep 12, 2024, 11:44 AM

PROJECT
ARTISTIC IMPRESSION OF AMENITIES





A semi-Olympic size residential swimming pool is a smaller version of an Olympic pool, ideal for residential and recreational use. While a full Olympic pool measures 50 meters in length and 25 meters in width, a semi-Olympic pool typically measures 25 meters in length and around 12.5 to 15 meters in width. The depth may vary, but it is generally between 1.2 to 2 meters, depending on the intended use for both casual swimming and training purposes.

These pools are designed to accommodate lap swimming, water sports, and fitness activities, making them a great addition to residential complexes, community centers, and private homes with larger spaces. Equipped with lanes, the semi-Olympic pool can be used for training by amateur swimmers and athletes looking to improve endurance and technique.

Semi-Olympic pools also offer flexibility for recreational swimming and are less costly to build and maintain compared to their Olympic-sized counterparts. They often feature additional amenities like poolside seating, heating systems, and sometimes even lighting for nighttime swimming. Their balanced size makes them ideal for both leisure and fitness activities in residential environments.

Do reach out to us in case you need any further information and / or clarification. We are happy to be of service!

Website:

www.77life.co.in

Phone:

+91 99002 48401

Mail:

crm@77towncentre.co.in

PRM/KA/RERA/1251/446/PR/211222/005551 For more detail visit <https://rera.karnataka.gov.in>.

The developer reserves the absolute right to change, omit, delete, add or revise amenities, specifications or any other details without notice.

Images used for representation purpose only. *T&C Apply