

# 77° LIFE

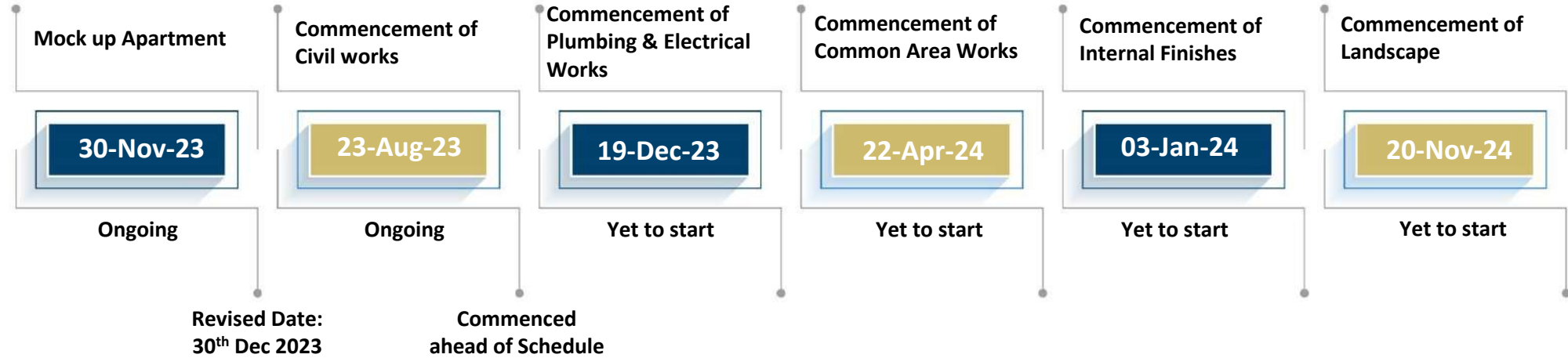
LIFE'S COMING TOGETHER.



## CONSTRUCTION UPDATE – OCTOBER 2023

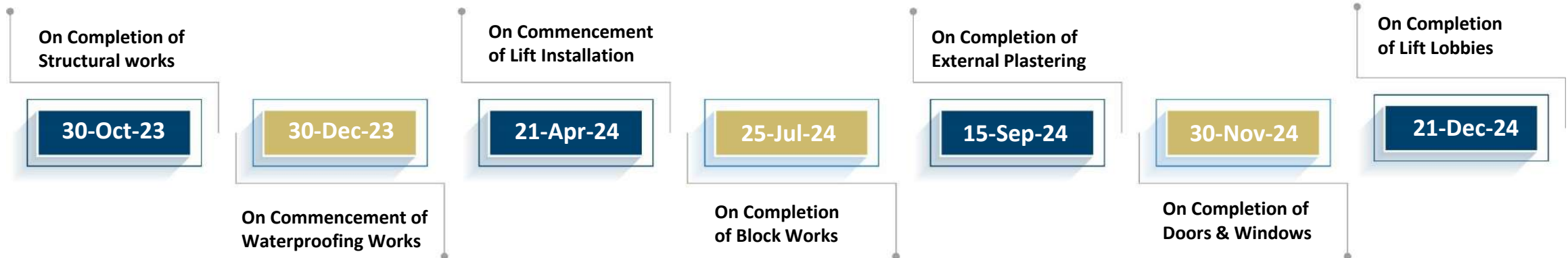
CONSTRUCTION SCHEDULE

MACRO SCHEDULE



TENTATIVE

PAYMENT MILESTONE



\* The construction progress schedule presented in this report is subject to change based on evolving project conditions and unforeseen factors.

# Upgraded Specifications\*

## Flooring and Dado

All Bedrooms

All Bathrooms

Powder Rooms

Engineered Wooden Flooring

Flooring in Imported Marble, Dado in Premium Vitrified

Flooring in Imported Marble, Dado in Premium Vitrified

## Plumbing and Bathroom Fixtures

Bathroom Counter

Kitchen Counter and Sink

Imported Marble for the Counters

Quartz Counter (uninstalled)

## False Ceiling

Apartment

Toilet

Gypsum False ceiling with LED concealed lighting as per default design

Modular False Ceiling with Calcium Silicate Board Tiles or Equivalent

## Power Supply; Electrical and Communication Systems

Wiring

Earthing

Concealed FRLS Wiring in PVC conduits

Earth Leakage Circuit Breaker (ELCB) and Miniature Circuit Breakers (MCB)

## Doors and Windows

Main Door

Internal Doors

Bathroom Doors

8' Solid Core Double Leaf Doors with Designer Veneer

7' Solid Core Veneered Flush Doors

7' Solid Core Flush Doors with Veneer & laminate

## Utilities & Services

Solar Water Heater

Elevators

Security

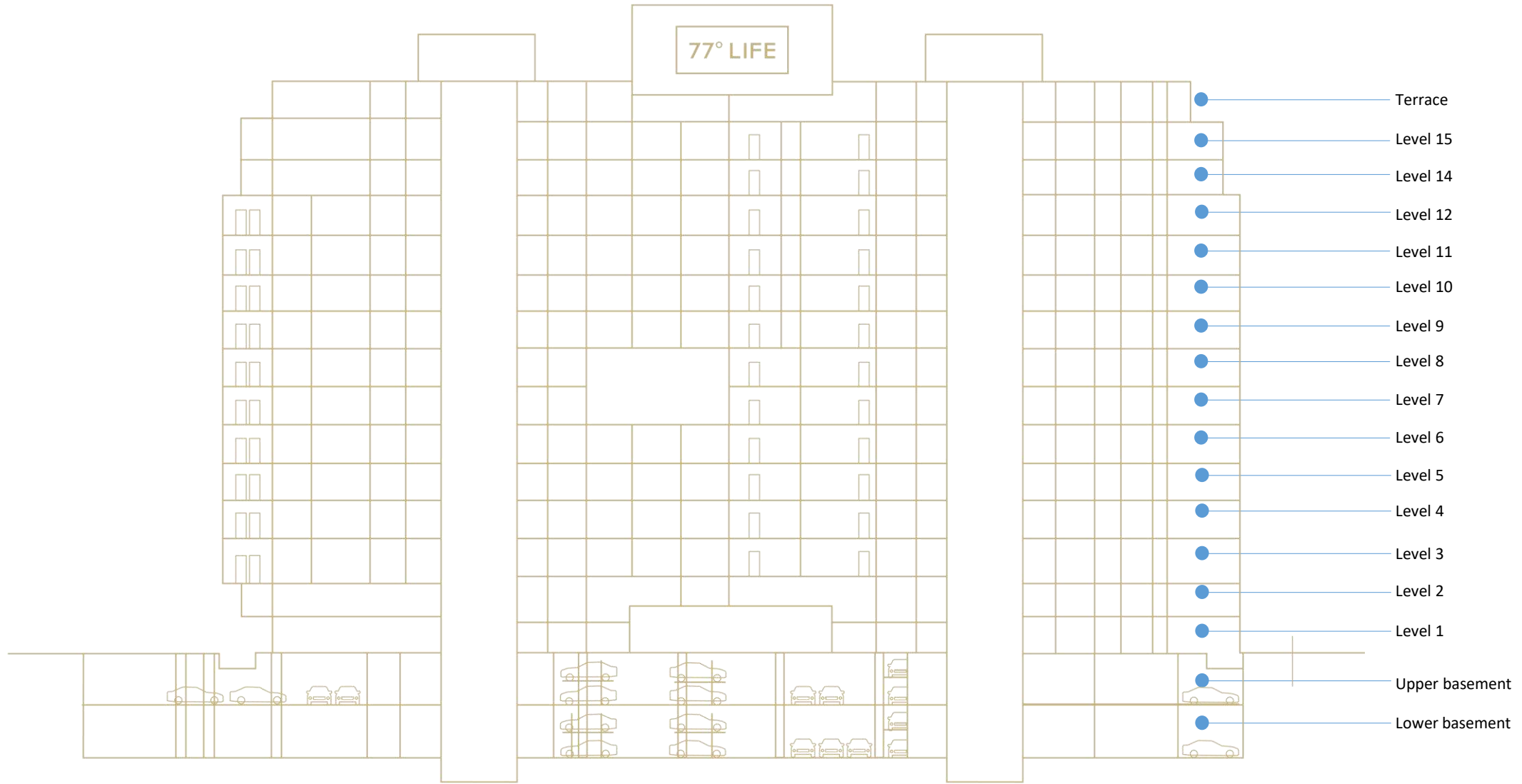
Provided as per M.O.E.F Norms (for Specific Apartments)

Schindler or Equivalent

Perimeter Cameras; 24/7 Patrolling, Access Control & Visitor Verification

\* Specifications have been upgraded vis-à-vis the specifications declared on the RERA application / website.

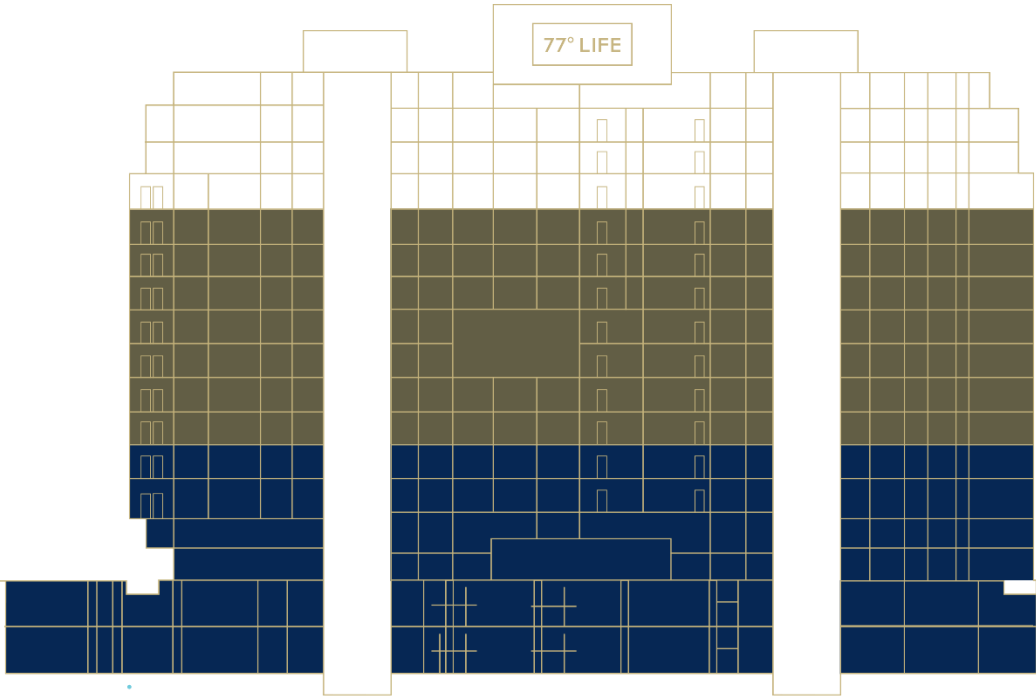
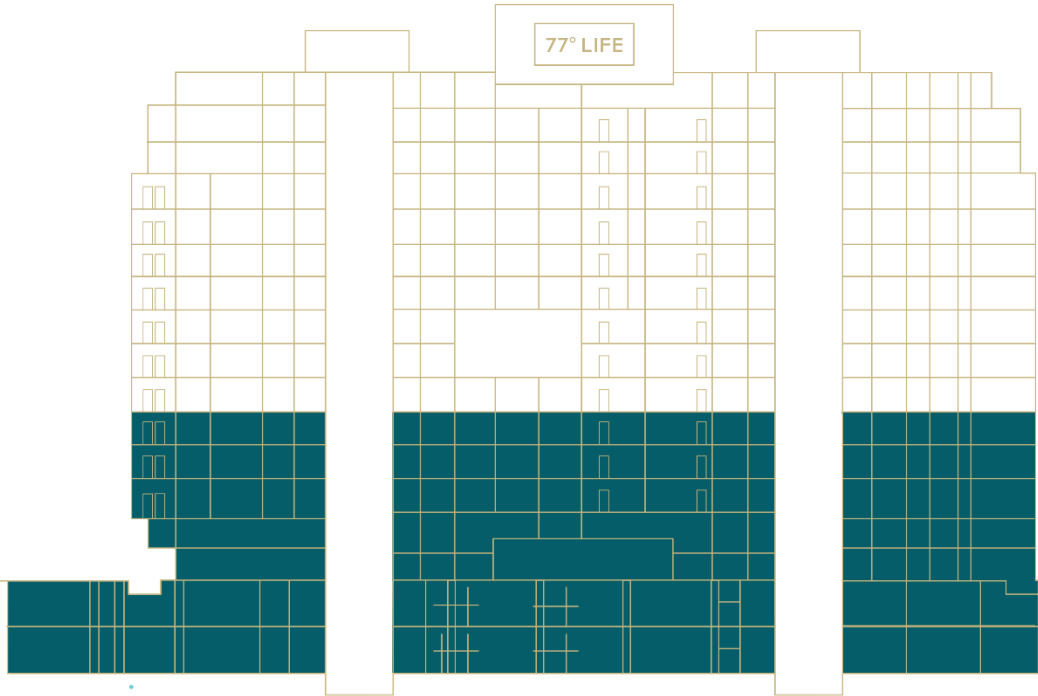
# South Elevation (facing 77° East)



\* Please refer this image as the key plan for the project

### Status - Block work

### Status - Structural work



Completed Work in progress

Completed Work in progress

## Basement – Lower & Upper



VDF Flooring and Primer works in Progress



**Block work in progress**



**Block work in progress**





**Block work in progress**



**Toilet Plastering works in progress**



**Toilet Plastering works in progress**



**Unit Plastering works in progress**

# Artistic Impressions

77° LIFE

LIFE'S COMING TOGETHER.



# Know your amenity



## Padel court

A Padel court is a specialized playing surface for padel tennis, a racquet sport blending elements of tennis and platform tennis. Padel courts are smaller, measuring 20ft by 44ft, and enclosed by walls and a mesh fence.

This setup fosters quick rallies and precise shots. Players use solid paddles and a depressurized ball, making it easier for all skill levels to engage in fast-paced doubles matches. Padel courts often feature heating systems, allowing year-round play.

These courts provide a unique space for recreational and competitive Padel tennis, accommodating enthusiasts in various climates.

*Do reach out to us in case you need any further information and / or clarification. We are happy to be of service!*

**Website:**

[www.77life.co.in](http://www.77life.co.in)

**Phone:**

+91 99002 48401

**Mail:**

[crm@77towncentre.co.in](mailto:crm@77towncentre.co.in)

PRM/KA/RERA/1251/446/PR/211222/005551 For more detail visit <https://rera.karnataka.gov.in>.

The developer reserves the absolute right to change, omit, delete, add or revise amenities, specifications or any other details without notice.

Images used for representation purpose only. \*T&C Apply